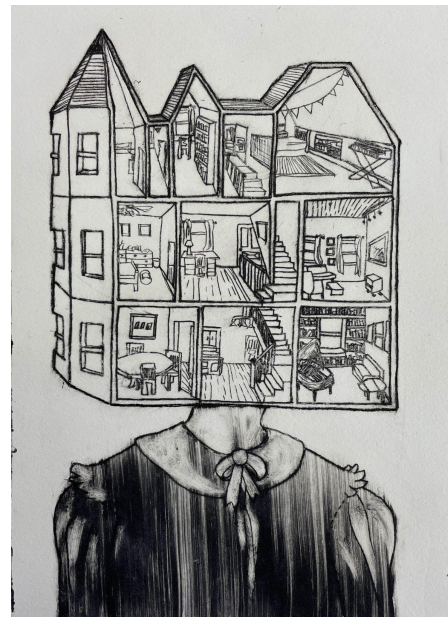


Imprint 2021 Opening March 13, 2022

Strath Haven High School Student Wins First Place in Wharton Esherick Museum Print Exhibition

Malvern, PA – The Wharton Esherick Museum is pleased to announce *Imprint 2022*, the 14th annual high school print exhibition. Open to students from Chester, Berks, Bucks, Delaware, Lehigh, Montgomery, and Philadelphia Counties, this completely virtual exhibition encourages new generations of young artists in the powerful medium of relief printmaking. In celebration of the Museum’s 50th anniversary and the importance of home in Esherick’s life’s work, this year students were asked to submit pieces on the theme ‘Visions of Home’. The exhibition will be viewable on the Museum website beginning March 13, 2022.

Strath Haven High School junior Winnie Kenney was awarded first prize by a jury of professional artists and museum staff for their print *Portrait of the Hutch*. The print is based on a poem Kenney wrote and illustrates their home as a doll house, placing each room and item within as accurately as possible. A cash prize of \$200 will be awarded to both Kenney and the school’s art department, which will also receive a free field trip to the Museum.



Portrait of the Hutch, Winnie Kenney,
Strath Haven High School

Second Place for *Imprint 2022* was awarded to Ionah Tau from Springfield Township High School, and third place went to Jorja Rembert from Methacton High School. Laylah Santacruz from Renaissance Academy Charter School won the Viewers’ Choice Award. Viewer’s Choice voting took place on the museum’s Facebook page, where followers were able to weigh in on their favorite prints.

Imprint 2022 highlights young artists who represent the future of this powerful medium while recognizing the important role printmaking played in Wharton Esherick’s life as he grew from a young painter to an internationally recognized artist and furniture designer. In another year rife with challenges, many students found themselves learning and practicing printmaking from home. Nevertheless, the submissions featured in *Imprint 2022* are sure to impress! We applaud art teachers and students everywhere who have continued to create, even in the face of adversity.

Imprint 2022 is a virtual exhibition viewable at whartonesherickmuseum.org/programs/ beginning March 13, 2022.

Award Winners:

1st Place: *Portrait of the Hutch* by Winnie Kenney
2nd Place: *Finding Home* by Ionah Tau
3rd Place: *Backbone of Growth* by Jorja Rembert
Viewers' Choice: *Home Tweet Home* by Laylah Santacruz

Strath Haven High School
Springfield Township High School
Methacton High School
Renaissance Academy Charter School

Additional Finalists in the Exhibition:

Ava Schwartz	Abington Senior High School
Kelly Downs	Abington Senior High School
Andy Schureman	Abington Senior High School
Ansharaye Williams	Abington Senior High School
Helike Milestone	Avon Grove High School
Jaylene Vergara Vargas	Avon Grove High School
Adriana K DiCampi	Avon Grove High School
Megan Smith	Bishop Shanahan High School
Lucy Campbell	Bishop Shanahan High School
Ava Ceulers	Bishop Shanahan High School
Thi Nguyen	Bishop Shanahan High School
Madelyn Rudolph	Bishop Shanahan High School
Naomi Aquino	Bishop Shanahan High School
Julia Bennett	Bishop Shanahan High School
Theresa McGill	Bishop Shanahan High School
Elle Udo	Bishop Shanahan High School
Aimee Raymundo	Bishop Shanahan High School
Hannah Kresefski	Bishop Shanahan High School
Chloe Szczesniuk	Bishop Shanahan High School
Beracah Peng	Downington STEM Academy
Gabriella Torres	Downington STEM Academy
Claire Blisard	Downington STEM Academy
Katie McDonnell	Downington STEM Academy
Finn Kohser	Downington STEM Academy
Lauren Selden	Downington STEM Academy
Lauren Leshko	Downington STEM Academy
Vicky Kang	Downington STEM Academy
Luke Roosevelt	Downington STEM Academy
Julia Jennings	Downington STEM Academy
Angelina Castiglione	Downington STEM Academy
Chloe Shih	Downington STEM Academy
Olivia Biancone	Exeter Township Senior High School
Cole Apeldorn	Holy Ghost Prep
Dominic Rivera	Holy Ghost Prep
David Stollsteimer	Holy Ghost Prep
Brandon Fey	Holy Ghost Prep
Jason Soule	Holy Ghost Prep
Jeffrey Shellenberger	Holy Ghost Prep

Yunfei Mo	Horace Howard Furness
Dronaka Outlaw	Jules E. Mastbaum AVT High School
Catherine Smith	Methacton High School
Ava Mancini	Methacton High School
Nam Nguyen	Methacton High School
Sara Legnola	Methacton High School
Jakelin Canas	Penn Wood High School
Norah Swartz	Springfield Township High School
Janaya Price	Springfield Township High School
Jia DeRosa	Springfield Township High School
Brooke Randa	Springfield Township High School
Morgan Prasalowicz	Villa Maria Academy High School
Charlotte Fritz	Villa Maria Academy High School

About the Wharton Esherick Museum:

The Wharton Esherick Museum, located just outside of Valley Forge Park in Malvern, PA is the handcrafted home and studio of Wharton Esherick (1887-1970), an internationally significant artist and leader of the Studio Furniture Movement. Esherick worked primarily in wood and extended his unique forms to furniture, furnishings, interiors, buildings, and more. His motto, "If it isn't fun, it isn't worth doing," is evident in the joyful expression of his work. A National Historic Landmark for Architecture, his hilltop studio/residence, with more than 300 of his works on exhibition, has been preserved much as it was when the artist lived and worked there.

Due to the COVID-19 pandemic, the Wharton Esherick Museum is currently closed to all on-site visitors. Details and reopening plans can be found at whartonesherickmuseum.org

Wharton Esherick Museum
P.O. Box 595
Paoli, PA 19301

Media Contact: Larissa Huff
larissa@whartonesherickmuseum.org
610-644-5822