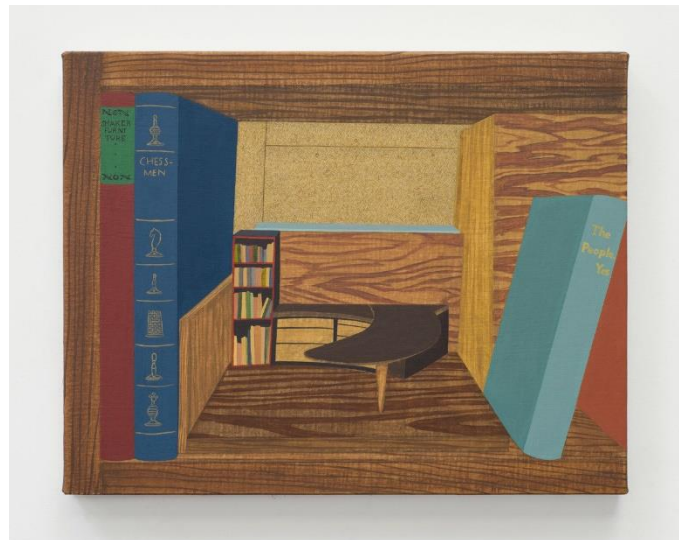


***Becky Suss/Wharton Esherick* March 4 – March 31, 2019**

***Becky Suss/Wharton Esherick* Paintings on View at Wharton Esherick Museum This March**

Malvern, PA – The Wharton Esherick Museum is thrilled to present a selection of paintings by Becky Suss from her Wharton Esherick Studio series. Recently on view in *Becky Suss/Wharton Esherick*, an exhibition at Fleisher/Ollman in Philadelphia, this temporary integration of Suss’s paintings into the Museum’s immersive collection brings full circle an exchange between the site and the artist, completing the collaboration that began last year.

Becky Suss is known for paintings that explore domestic interiors, from architecture and furniture to artworks, decor, and books. Her paintings are oblique memorials to family and family friends who once inhabited the interiors she depicts. While always devoid of figures, the paintings are nonetheless portraits of people. Diverging from her usual role of memory painter, in the Esherick series, Suss trained her eye on a very specific set of interiors, engaging with the actual spaces in “real” time during an informal residency at the Museum, as well as through photographic documentation.



Becky Suss, *Maquette (Wharton Esherick)*, 2018
Oil on canvas, 11 x 14 in

Presented by Fleisher/Ollman, *Becky Suss/Wharton Esherick* displayed Suss’s paintings of the Wharton Esherick Studio accompanied by furniture, furnishings, and sculpture made by Wharton Esherick and ephemera from his home and studio. As Wharton Esherick Museum Curator and Program Director Laura Heemer describes it, “This second phase of the exhibition enfolds Becky Suss’s paintings back into the Studio from which they were inspired, displaying her work not only in the Visitor Center exhibition area, but incorporated among Esherick’s belongings. In his own life, Esherick surrounded himself with creative friendships that inspired and fueled his artistic practice. Suss’s paintings in the Studio remind us of this cycle of inspiration between artists and between generations.”



Becky Suss, *Bird in Rain* (Wharton Esherick), 2018, Oil on canvas over panel, 14 x 11 in

Becky Suss/Wharton Esherick is on display in the Visitor Center and inside the Museum. Exhibitions in our Visitor Center are free to the public. This does not include admission to the Museum for which advance reservations are required.

About the Wharton Esherick Museum:

The Wharton Esherick Museum, located just outside of Valley Forge Park in Malvern, PA, is the handcrafted home and studio of Wharton Esherick (1887-1970), an internationally significant artist and leader of the Studio Furniture Movement. Esherick worked primarily in wood and extended his unique forms to furniture, furnishings, interiors, buildings, and more. His motto, “If it isn’t fun, it isn’t worth doing,” is evident in the joyful expression of his work. A National Historic Landmark for Architecture, his hilltop studio/residence, with more than 300 of his works on exhibition, has been preserved much as it was when the artist lived and worked there.

The Wharton Esherick Museum is experienced through guided tours that must be reserved in advance. The Museum is open for tours Tuesday – Friday (for groups of 5 or more) from 10 am to 4 pm, Saturdays from 10 am – 4 pm and Sundays from 1 pm - 4 pm (no minimum requirement on weekends). Advanced tickets are required, and can be purchased at whartonesherickmuseum.org. For more information call 610-644-5822 or email info@whartonesherickmuseum.org.

Wharton Esherick Museum
P.O. Box 595
Paoli, PA 19301

Media Contact: Katie Wynne
katie@whartonesherickmuseum.org
610-644-5822